



An ISO 9001 :2015 Certified

AiNS™
COMPUTER INSTITUTE

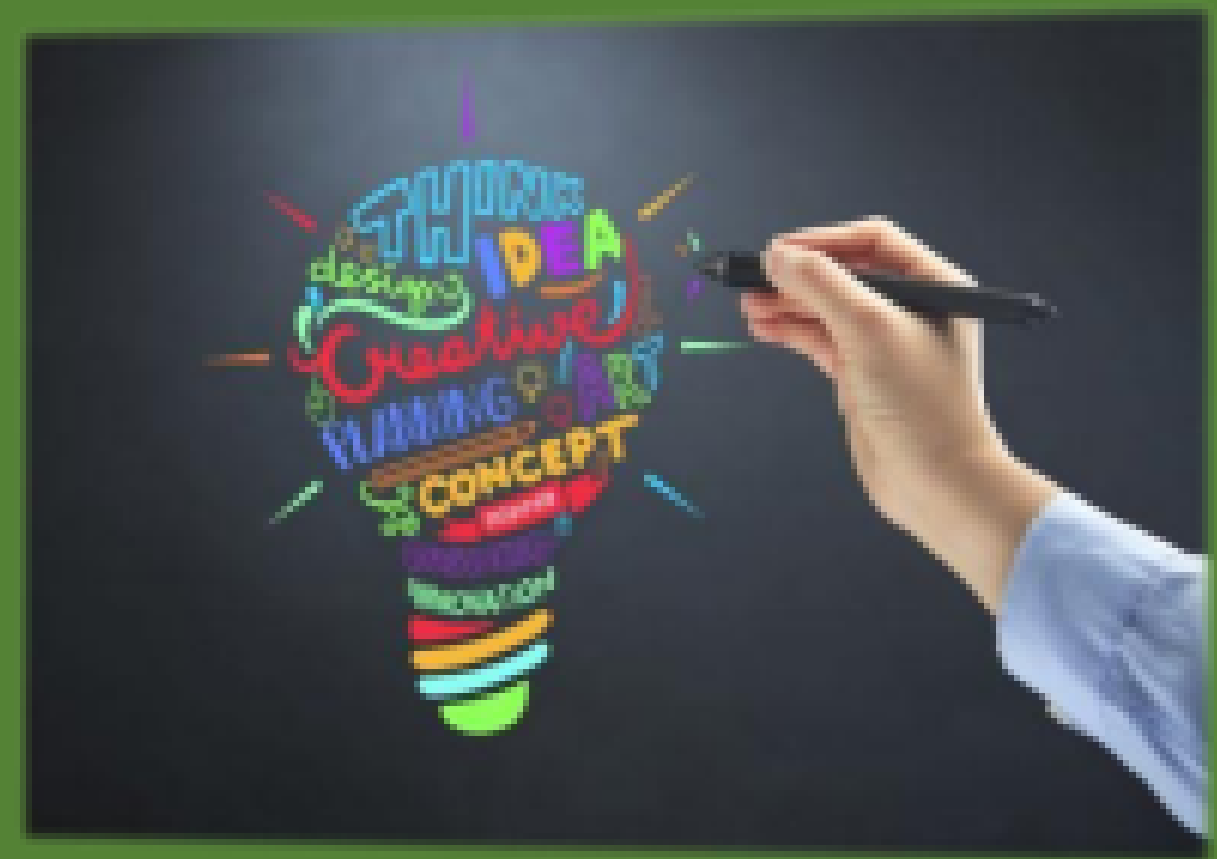
COREL DRAW SYLLABUS



□ CORELDRAW

INTRODUCTION

- Welcome screen + workspace tour + overview
- Vector vs. bitmap
- Customizing the page layout
- Working with multiple pages
- Using snap to + guidelines Drawing shapes
- Rectangle tool - ellipse tool - ctrl +shift
- The pick tool + zooming
- Polygons, stars, spirals + graph paper
- The perfect shapes collection
- Selecting objects
- Deleting objects
- Duplicating objects + step + repeat
- Cut, copy, paste
- Undo, redo, repeat
- Arranging objects
- Grouping + un-grouping



CREATING CUSTOM SHAPES

- Curve tools
- Freehand tool
- Bezier tool
- Curves + nodes
- Adding, deleting nodes
- Bending + straightening lines Colors + Fills
- Introducing color palettes
- Cmyk, rgb and pantones Filling objects
- Using the interactive fill tool
- Solid fills
- Linear, radial, conical + square fills
- Two color patten fills
- Full color pattern fills
- Bitmap pattern fills
- Texture fills
- No fill



OUTLINES

- Outlines and advanced outline options
- Converting outlines to objects
- Using the eye dropper and paint bucket tool Working with artistic text
- Creating artistic text with the text tool
- Character formatting + fonts
- Spelling + quick correct
- Fitting text to path
- Inserting symbol characters
- Converting text to curves



TRANSFORMATION

- Flipping, scaling, rotating, distorting, perspective
- Control options
- Free transform, straighten or tilt Working with Text
- Warp Text
- Text with underline and Strikethrough
- Text with mask Image
- Image sizes (handout)
- Image size vs. canvas size
- Cropping (and resizing), plus manual
- Image modes
- Basic retouching with clone, heal, patch tools Color adjustment
- Basic tonal adjustment/enhancement
- Brightness/contrast: when to use levels (+ auto), shadow/highlight

'QUALITY' ADJUSTMENT

- Dust and scratches, reduce noise
- Blur, Gaussian blur
- Sharpen/unsharpened, and size issues Selections
- Various tools, tool options
- Inversing, feathering, grow, smooth, expand, similar
- Pen tool specifics
- Paths to selections
- Selection with Mask

OUTPUTTING FOR THE WEB

- Optimizing for Web colors
- Resizing and compressing an image for quick rendering Saving
- Save options, file formats for InDesign, web etc.
- Paths to Illustrator • Keyboard shortcuts Project achievements:
- House ad/poster
- Duotone photograph
- Repaired photograph

